

Model: WL-LED310

LEDme® Step Light

WAC LIGHTING

Responsible Lighting®



Fixture Type:

Catalog Number:

Project: _____

Location: _____

PRODUCT DESCRIPTION

Circular window LEDme® Step Light. Designed for safety and style on stairways, patios, decks, balcony areas, walkways and building perimeters. Features an architectural design. Energy efficient for long-lasting indoor and outdoor lighting solutions. Creates an attractive, romantic impression at night. Colored lights can be used for way finding.

FEATURES

- Direct wiring, no driver needed
- Low profile, flush to wall aesthetics with no visible hardware
- 40,000 hour rated life
- Title 24 Compliant
- Balanced lighting, free of shadows with minimum glare
- Up to 200 fixtures can be connected in parallel
- 5 year WAC Lighting product warranty

ORDER NUMBER

Model	Light Color	Finish	Lumens	
WL-LED310	C	White	BN* Brushed Nickel	115
			BZ Bronze	115
			WT White	115
	AM	Amber	BN* Brushed Nickel	71
			BZ Bronze	71
			WT White	71
	RD	Red	BN* Brushed Nickel	7
			BZ Bronze	7
			WT White	7
	BL	Blue	BN* Brushed Nickel	13
			BZ Bronze	13
			WT White	13

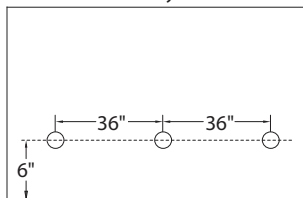
*Brushed Nickel Finish is for interior use only

WL-LED310 - -

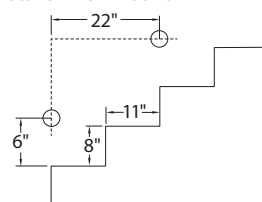
Example: WL-LED310-C-WT

SPACING RECOMMENDATIONS FOR OPTIMAL LIGHT DISTRIBUTION

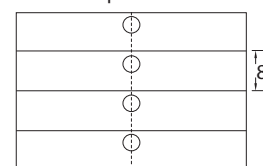
Corridors / Hallways



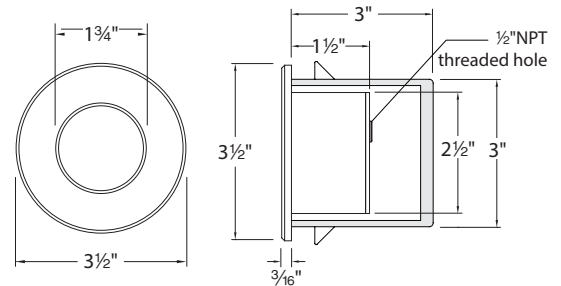
Stairs - Wall Mount



Stairs - Step Mount



Mount in center of stair as close to the upper tread as possible. For best results use one light per step for steps narrower than 5'.



SPECIFICATIONS

Construction: Die-cast aluminum

Input: 120VAC 50/60Hz

Power: Direct wiring, no remote driver needed

Light Source: 3000K Samsung HV-AC High Power LED, CRI: 85
Total power consumption of 3.9W

Mounting: Supplied with junction box for recessed installation
Suitable for new construction or retrofit installations.
See next page for spacing recommendations

Dimming: Dim to 10% with electronic low voltage (ELV) dimmer
Approved dimmers: Lutron Nova-T NTELV-300 & NTELV-600,
Lutron Vietri VTELV-600, Lutron Diva DVELV-300P,
Lutron Skylark SELV-300P, Lutron Maestro MAELV-600

Standards: IP66, UL & cUL listed for wet locations, Title 24 Compliant

FINISHES



waclighting.com
Phone (800) 526.2588
Fax (800) 526.2585

Headquarters/Eastern Distribution Center
44 Harbor Park Drive
Port Washington, NY 11050

Central Distribution Center
1600 Distribution Ct
Lithia Springs, GA 30122

Western Distribution Center
1750 Archibald Avenue
Ontario, CA 91760